



## 2010 AKA MANUAL

### ADDENDUM No.17

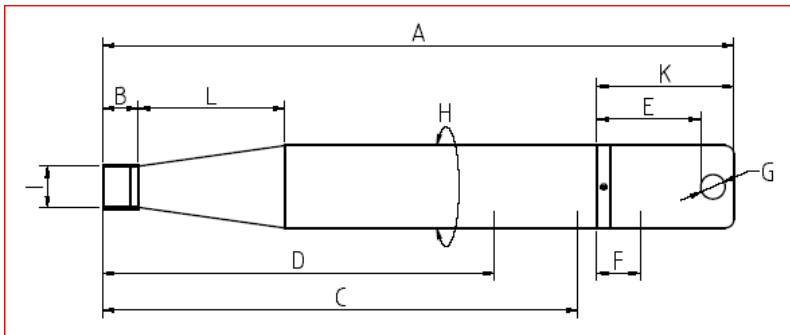
Issued: 5<sup>th</sup> June 2010

At the NKC meeting of 5 June 2010 the following was approved.

Effective Immediately

#### Rule 25.22.2 AKA Control Muffler

The drawing in the manual is incorrect and is to be replaced with drawing below.



Pam Arnett  
National Secretary  
Australian Karting Association